



**iM60**  
Patient Monitor

# iM60 Patient Monitor



## About Edan

Edan is a healthcare company dedicated to improving the human condition around the world by delivering value-driven, innovative and high-quality medical products and services. For over 20 years, Edan has been pioneering a comprehensive line of medical solutions that address a broad range of healthcare practices including:

- Diagnostic ECG
- Patient Monitoring
- OB/GYN
- Ultrasound Imaging
- Point-of-Care Testing
- In-Vitro Diagnostics
- Veterinary

Healthcare professionals around the world depend on Edan's breakthrough medical technologies and outstanding customer support.



**Training. Supplies. Questions.**  
Give us a call...we're here to help!

**SR Sedation Resource**  
Keeping Sedation Simple

**800-753-6376**  
sedationresource.com



ENG-PM-iM60-V2.0-20150323

© 2015 Edan Instruments, Inc. All rights reserved. Features and specifications are subject to change without prior notice. No reproduction, copy or transmission may be made without written permission.





# iM60

Patient Monitor



10.4"

Maximum 11 Waveforms



## Configurations

### Basic Measurements for Sub-acute Cares

- A full set of basic parameters including 3/5 lead ECG, HR, RESP, EDAN SpO<sub>2</sub> (NELLCOR optional), NIBP, PR, and 2-channel temperature is employed

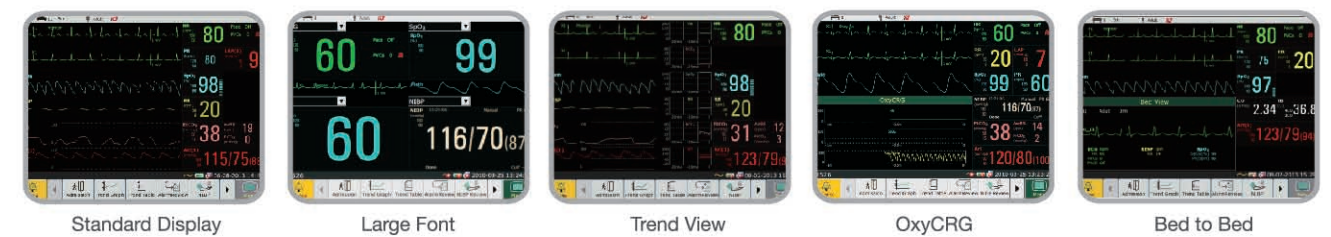
### Critical Measurements for Acute Cares

- The introduction of 2-channel invasive BP, cardiac output, and end tidal carbon dioxide may suit the requirements of most acute cares

## Reliable Algorithms

- iSEAP™ ECG algorithm optimized for arrhythmia detection, pacemaker detection, and HR measurement
- iMAT™ SpO<sub>2</sub> algorithm with outstanding motion resistance and low perfusion resistance performance
- iCUPS™ NIBP algorithm optimized for cardiac patients, hypertensive patients, and neonatal patients

## Multiple Display Modes



## End tidal Carbon Dioxide for Intubated/Non-Intubated Patients



### EDAN G2 CO<sub>2</sub> (Sidestream)

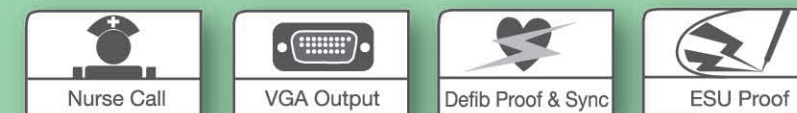
- Superior water trap design for accurate monitoring
- iCARB™ algorithm with intelligent CO<sub>2</sub> pseudo wave identification technology
- Multiple sampling accessories as options for adult, child and neonate patients

### Respironics CO<sub>2</sub> (Mainstream/Sidestream)

- Plug & play module design
- Dehumidification tube instead of water trap
- Low sampling rate of 50ml/min suitable for all types of patients



No-fan Design   Night Mode   Shortcut Menu   Thermal Recorder



Nurse Call   VGA Output   Defib Proof & Sync   ESU Proof



Bed Rail Hook   Wall Mount   Rolling Stand

## Built-in Temporary Memory:

<b>1200</b> NIBP Measurement Review	<b>120 h</b> Trend Review	<b>60</b> Alarm Review	<b>120 s</b> Frozen Waveform
--	------------------------------	---------------------------	---------------------------------